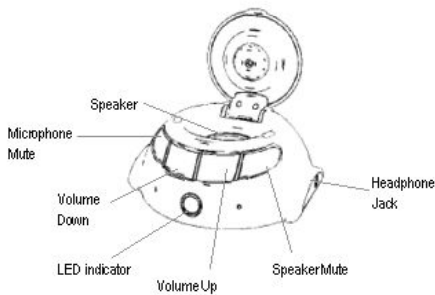


Portable Speaker Phone



User's Guide Version 1.0

Introduction and Features



System Requirement

- Pentium 4/Celeron, AMD 1GHz or faster processor, minimum 256MB RAM
- Microsoft Windows ME/2000/XP/Vista series
- USB compatible

Package Contents

- Portable Speaker Phone with USB cable
- Setup Installation and Software CD
- User Guide

Getting started

You will need to install the drivers and application software in the included CD before connecting the unit.



Do not connect your new unit to your computer before installing the drivers.



Tips

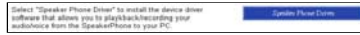
If you accidentally begin installation with your unit connected and the Add New Hardware Wizard or Found New Hardware Wizard dialog box appears, click the **Cancel** tab.

Installation Steps:

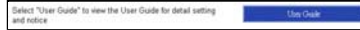
1. Insert the Installation CD into your CD-ROM drive. The installation program should start automatically. Follow the on-screen instructions to finish up the installation.



2. Click the "Speaker Phone Driver" icon to install device driver.



3. Select "User Guide" to know more about detail setting.



Settings

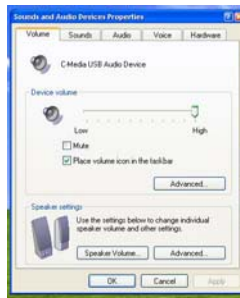
Audio setting

1. To use this device, you will need to have Microsoft Windows ME/2000/XP/Vista installed on your computer.
2. To use this device for internet communication, you must have a broadband internet connection and applicable software which supports audio calls (such as Skype) installed properly on your computer.
3. You can verify and adjust the audio settings by following these steps:
 - i. In the Windows Start menu, go to **Control Panel**
 - ii. Select the **Sound and Audio device** icon
 - iii. In the **Audio** tab, click on the **volume** button, a **Volume Control** screen appears
 - iv. You can adjust the volume of the microphone and speaker by using the control buttons located at the front of the unit directly.



Tips

1. If you cannot hear any sound from the unit, close all your current applications. Select **Start** -> **Control Panel** -> **Sounds and Audio devices** -> **Audio** -> then select "C-Media USB audio Device" as the *default Windows Audio device* for both sound playback and sound recording.



2. To check volume settings or when there is no sound from the unit, repeat step 1) above to select **Sounds and Audio devices** -> **Volume** -> make sure that "Mute" check box is not checked. When you select **Advanced** button, a "**Volume Control**" screen pops-up. You may adjust volume up or down accordingly.
3. To check microphone settings, bring up the "Volume Control" screen, click **Advanced** button and select **Options** -> **Properties** -> **Adjust volume for -> Recording**.
4. Make sure "**Recording**" is checked and click **OK**, there will be a new **Advanced** button. Select "**Options** -> **Advanced Controls** -> **Other Controls**". Make sure that "**AGC**" is not checked.
5. If your unit's LED changes from "blue" to "red" color, it is in mute recording state. Press the "**Microphone Mute**" button on your unit once and the LED will change back to "blue" again.

Useful information

1. Connect your Speaker Phone directly to the available USB port. Using an extended cable or USB hub device is not recommended.

2. For stereo sound of audio playback or private conversation, stereo headphones can be plugged into 3.5mm stereo headphone jack located on the side of the unit.

FCC Certification

This device complies with part 15 of the FCC rules. Operation is subject to the following two conditions:

- (1) This device may not cause harmful interference, and
- (2) This device must accept any interference, received, including interference that may cause undesired operation.

Note:

This equipment has been tested and found to comply with the limits for a Class B digital device, pursuant to part 15 of the FCC Rules. These limits are designed to provide reasonable protection against harmful interference in a residential installation. This equipment generates, uses, and can radiate radio frequency, energy and, if not installed and used in accordance with the instructions, may cause harmful interference to radio communications. However, there is no guarantee that interference will not occur in a particular installation. If this equipment does cause harmful interference to radio or television reception, which can be determined by turning the equipment off and on, the user is encouraged to try to correct the interference by one or more of the following measures:

- Reorient or relocate the receiving antenna.
- Consult the dealer or an experienced radio/TV technician for help.
- Increase the separation between the equipment and receiver.
- Connect the equipment into an outlet on a circuit different from that to which the receiver is connected.

CAUTION

Any changes or modifications not expressly approved by the party responsible for compliance could void the user's authority to operate the equipment.

FOR EUROPE



"The unit is in conformity with the EMC directive and low-voltage directive."

Disclaimer

Information in this document is subject to change without notice. The manufacturer does not make any representations or warranties (implied or otherwise) regarding the accuracy and completeness of this document and shall in no event be liable for any loss of profit or any other commercial damage, including but not limited to special, incidental, consequential, or other damages. No part of this document may be reproduced or transmitted in any form by any means, electronic or mechanical, including photocopying, recording or information recording and retrieval systems without the express written permission of the manufacturer.

WEEE LOGO



Disposal of Old Electrical & Electronic Equipment (Applicable in the European Union and other European countries with separate collection systems)

All trademarks and logos belong to their respective owners.

Configuration système requise

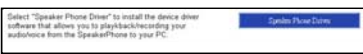
- Pentium 4/Celeron ou AMD 1GHz ou processeur plus rapide, 256MB RAM recommandés.
- Compatible Microsoft Windows ME/2000/XP/Vista

Étapes d'installation :

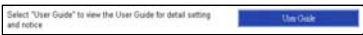
1. Insérez de CD d'installation le dans lecteur le CD-ROM. Le programme démarre d'installation automatiquement. Suivez les instructions à l'écran pour terminer l'installation.



2. Cliquez sur l'icône "Speaker Phone Driver (Pilote du haut-parleur téléphonique)" pour installer le pilote du périphérique.



3. Sélectionnez "User Guide (Guide d'utilisation)" pour en savoir plus sur les réglages détaillés.



French

Requisiti del sistema

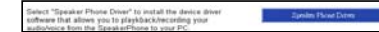
- Processore Pentium 4/Celeron ed AMD 1GHz o più potente; 256MB di RAM raccomandati.
- Compatibile con Microsoft Windows ME/2000/XP/Vista

Fasi d'installazione:

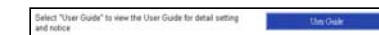
1. Inserire il CD d'installazione nell'unità CD-ROM. Il programma d'installazione dovrebbe avviarsi automaticamente. Seguire le istruzioni su schermo per completare l'installazione.



2. Fare clic sull'icona "Speaker Phone Driver" (Driver vivavoce) per installare il driver.



3. Selezionare "User Guide" (Guida dell'utente) per altri dettagli sulle impostazioni.



Italian

Requisitos do sistema

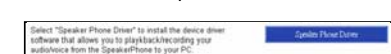
- Processador Pentium 4/Celeron e AMD de 1 GHz ou acima, 256 MB de RAM recomendado.
- Compatível com o Microsoft Windows ME/2000/XP/Vista

Instalação:

1. Introduza o CD de instalação na unidade de CD-ROM. O programa de instalação inicia automaticamente. Siga as instruções no ecrã para concluir a instalação.



2. Clique no ícone "Speaker Phone Driver" (Controlador do altifalante) para instalar o controlador do dispositivo.



3. Selecione a opção "User Guide" (Guia do utilizador) para obter mais informações.



Portuguese

Systemanforderungen

- Pentium 4/Celeron und AMD 1GHz oder noch schnellere CPU, 256MB RAM empfohlen.
- Microsoft Windows ME/2000/XP/Vista - kompatibel

Installationschritte:

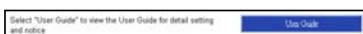
1. Legen Sie die Installations-CD in Ihr optisches Laufwerk ein. Das Installationsprogramm wird automatisch gestartet. Folgen Sie den Bildschirmanweisungen, um die Installation fertig zu stellen.



2. Klicken Sie auf das "Speaker Phone Driver [Lautsprechertelefontreiber]"-Symbol, um den Gerätetreiber zu installieren.



3. Wählen Sie "User Guide [Bedienungsanleitung]" für Details zur Einstellung.



German

Requisitos del Sistema

- Recomendado Pentium 4/Celeron y procesador AMD 1GHz ó superior, 256MB RAM.
- Compatible con Microsoft Windows ME/2000/XP/Vista

Pasos de la Instalación:

1. Inserte el CD de Instalación en su unidad CD-ROM. El programa de Instalación debería comenzar automáticamente. Siga las instrucciones de la pantalla para finalizar la instalación.



2. Haga clic en el icono "Speaker Phone Driver" (Controlador de Teléfono Altavoz) para instalar el controlador del dispositivo.



3. Seleccione "User Guide" (Guía del Usuario) para saber más sobre los detalles de la configuración.



Spanish

Systemvereisten

- Pentium 4/Celeron en AMD 1GHz of snellere processor, 256MB RAM aanbevolen.
- Compatibel met Microsoft Windows ME/2000/XP/Vista

Installatiestappen:

1. Plaats de installatie-cd in het cd-romstation. Het installatieprogramma zou automatisch moeten starten. Volg de richtlijnen op het scherm om de installatie te voltooien.



2. Klik op het pictogram "Speaker Phone Driver" (Stuurprogramma luidsprekertelefoon) om het apparaatstuurprogramma te installeren.



3. Selecteer "User guide" (Gebruikershandleiding) voor meer details over de instellingen.



Dutch